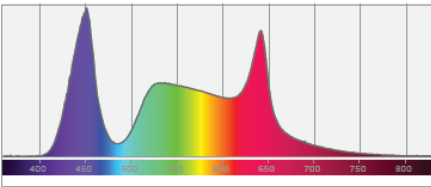
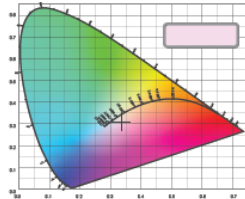


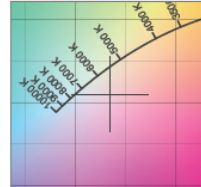
**Spectral distribution**



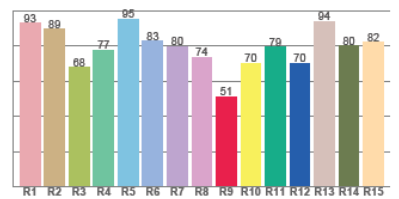
**Color coordinates**



**Zoom color point**



**CRI R values**



# Photometric Test Report

\*Due to additional product enhancements, an updated version of this report may be available online. Please check [www.adj.com](http://www.adj.com) for the latest revision/update of this report.

# 7P Hex IP



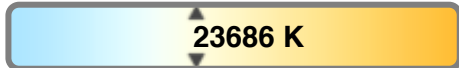
Light Efficiency:



Light Quality:



Color Temperature:



Output: 1643 lm

Peak: 8723 cd

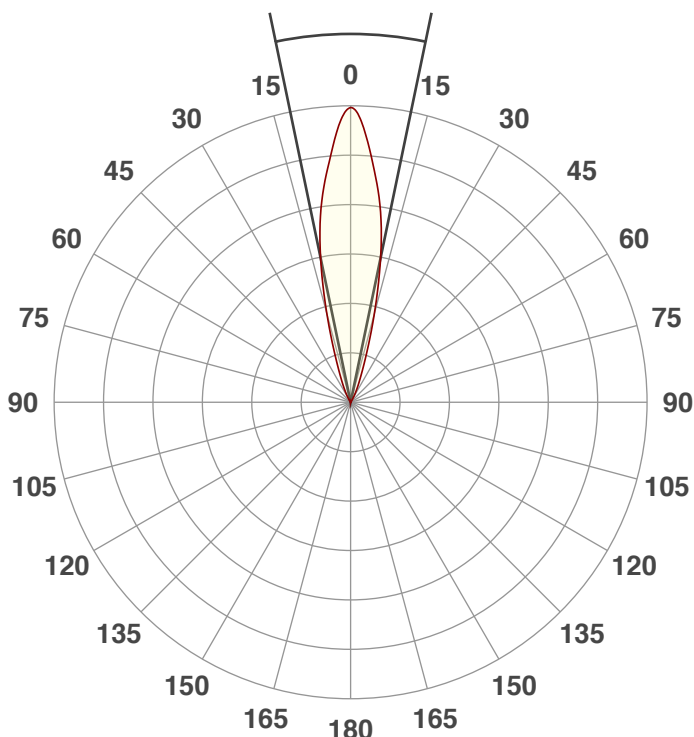
Power: 58.9 W

PF: 0.99



Beam Angle

## 23.5°



Test:

Full On

Date:

6/20/2018

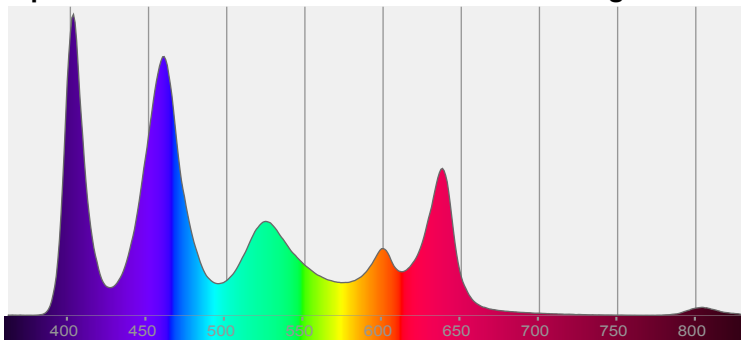
Note:



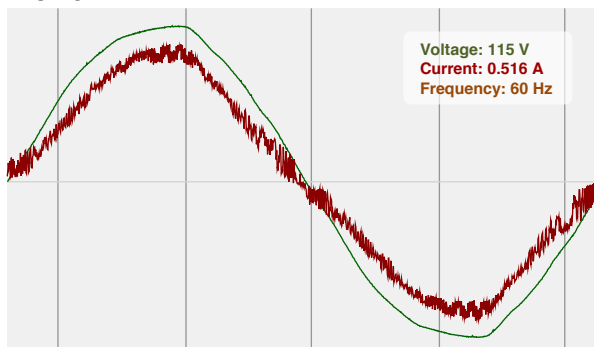
CIE 1931  
x: 0.271  
y: 0.237

Spectra

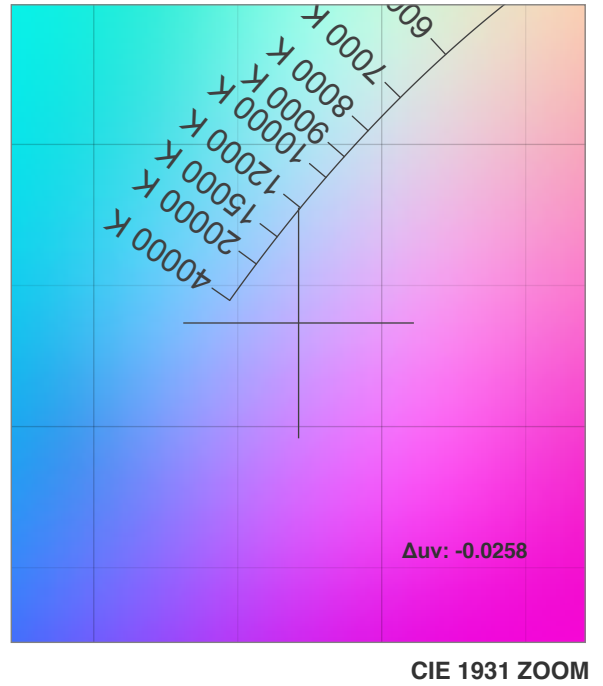
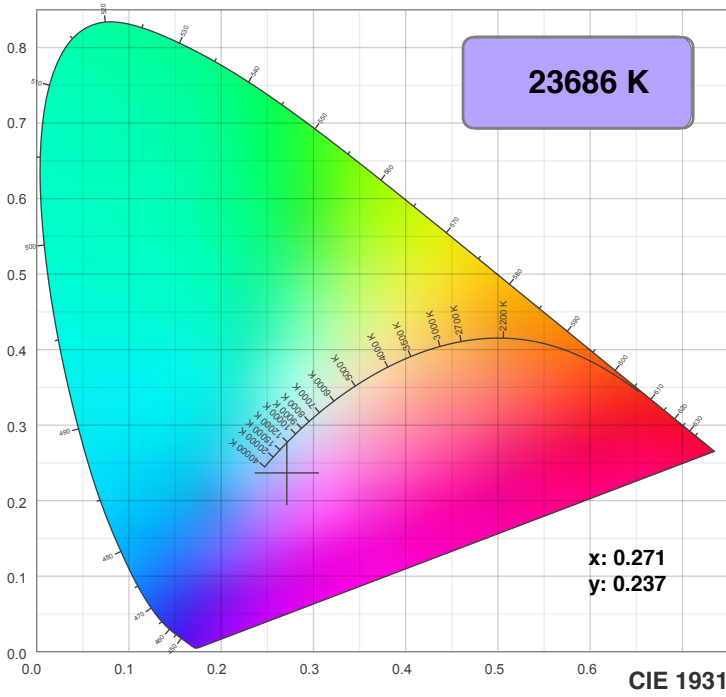
Dominant Wavelength: 432nm



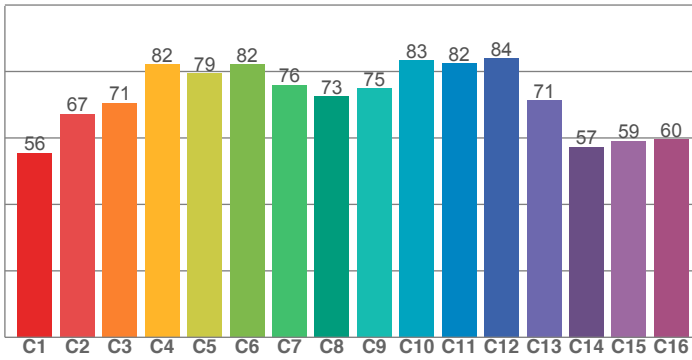
Power



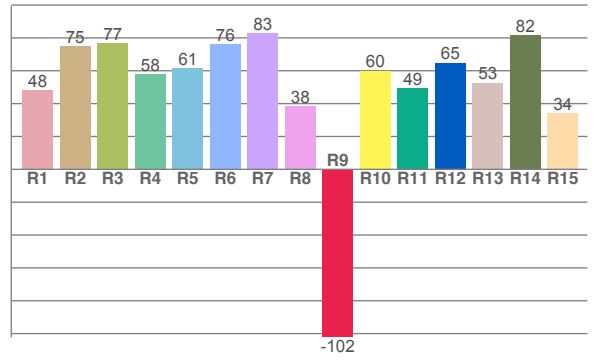
# Color Details



**TM30: 73.8**



**CRI: 64.5 (R1-R8)**



**CRI R values, only R1-R8 are used to calculate final CRI value**

R1	R2	R3	R4	R5	R6	R7	R8	R9	R10	R11	R12	R13	R14	R15
48.0	75.0	76.7	57.6	61.5	76.0	82.7	38.3	-102.3	60.0	49.3	64.9	52.7	81.6	34.0

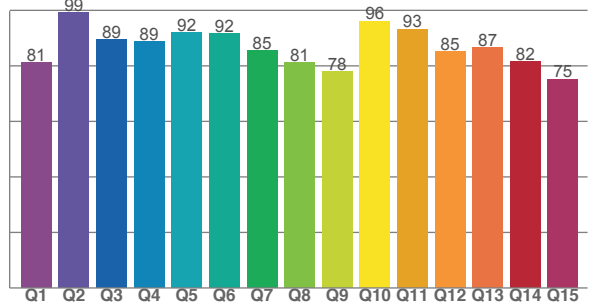
**TM30 C values, 16 binned values out of total of 99 C values**

C1	C2	C3	C4	C5	C6	C7	C8	C9	C10	C11	C12	C13	C14	C15	C16
55.5	67.2	70.5	82.1	79.3	82.1	75.9	72.5	74.9	83.3	82.4	83.9	71.3	57.3	59.2	59.6

**CQS Q values**

Q1	Q2	Q3	Q4	Q5	Q6	Q7	Q8	Q9	Q10	Q11	Q12	Q13	Q14	Q15
81.1	99.2	89.4	88.6	92.0	91.5	85.5	81.2	78.0	96.1	93.2	85.1	86.6	81.5	75.2

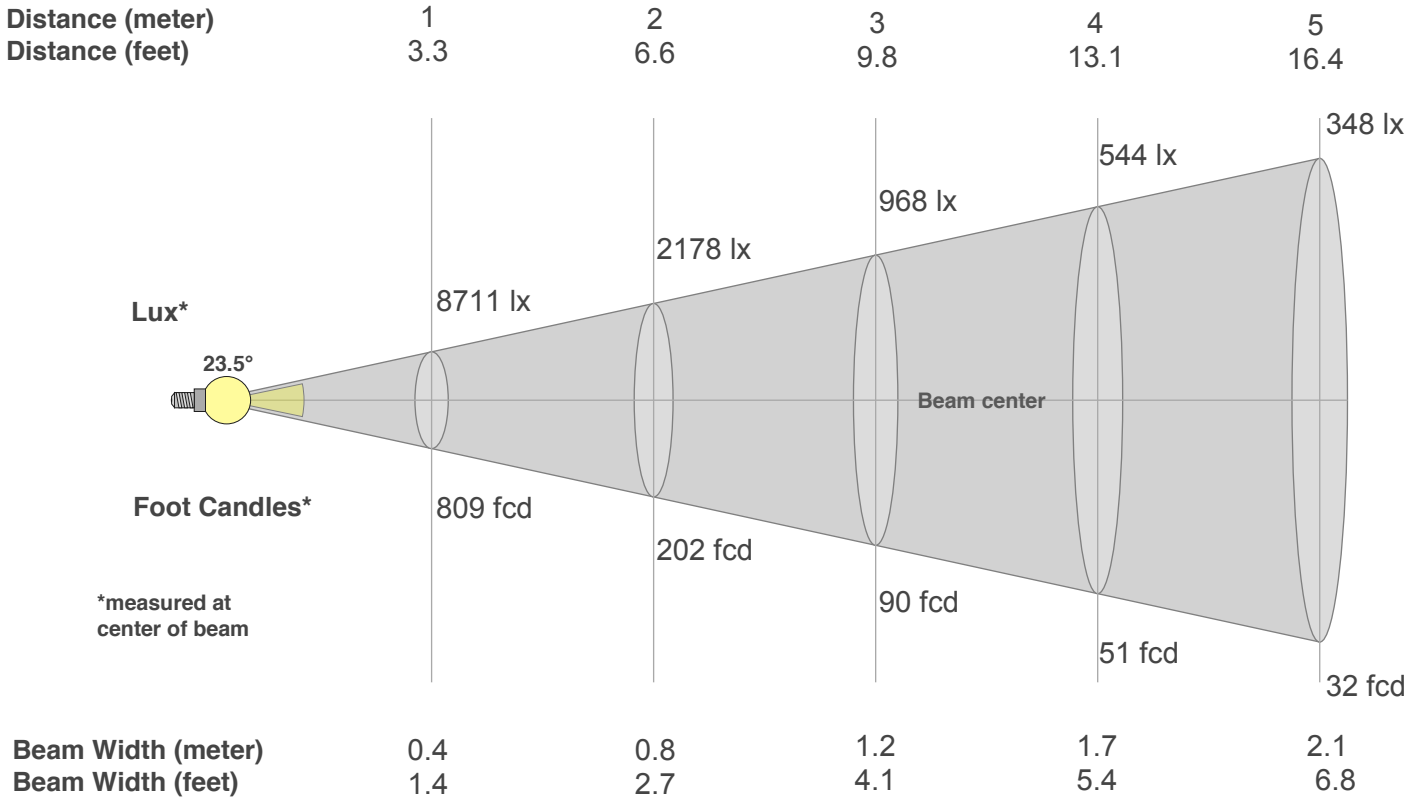
**CQS: 85.4**



## Color Parameters

Color Temperature	Color Rendering Index	Red Component	Color Fidelity	Color Gamut	Color Quality Scale	Color Coordinate CIE 1931	Color Coordinate CIE 1931	Color Coordinate	Color Coordinate	Color Deviation from Black Body
CCT	CRI	CRI R9	TM30 Rf	TM30 Rg	CQS	x	y	u	v	Δuv
23686 K	64.5	-102.3	73.8	112.6	85.4	0.271	0.237	0.205	0.268	-0.0258

# Beam Details



## Beam Intensities from 1-20m

m	1	2	3	4	5	6	7	8	9	10	11	12	13	14	15	16	17	18	19	20
ft	3.3	6.6	9.8	13.1	16.4	19.7	23	26.2	29.5	32.8	36.1	39.4	42.7	45.9	49.2	52.5	55.8	59.1	62.3	65.6
lx	8711	2178	968	544	348	242	178	136	108	87	72	60	52	44	39	34	30	27	24	22
fcd	809.3	202.3	89.9	50.6	32.4	22.5	16.5	12.6	10	8.1	6.7	5.6	4.8	4.1	3.6	3.2	2.8	2.5	2.2	2

## Intensities in 0° C-plane

0°	2°	4°	6°	8°	10°	12°	14°	16°	18°	20°	22°	24°	26°	28°	30°	32°	34°	36°	38°
8711	8349	7578	6818	6073	5218	4230	3208	2278	1548	1055	743	527	366	243	154	96	67	44	33
100%	96%	87%	78%	70%	60%	49%	37%	26%	18%	12%	9%	6%	4%	3%	2%	1%	1%	1%	0%

## Intensities in 90° C-plane

0°	2°	4°	6°	8°	10°	12°	14°	16°	18°	20°	22°	24°	26°	28°	30°	32°	34°	36°	38°
8711	8349	7578	6818	6073	5218	4230	3208	2278	1548	1055	743	527	366	243	154	96	67	44	33
100%	96%	87%	78%	70%	60%	49%	37%	26%	18%	12%	9%	6%	4%	3%	2%	1%	1%	1%	0%

## Intensities in 180° C-plane

0°	2°	4°	6°	8°	10°	12°	14°	16°	18°	20°	22°	24°	26°	28°	30°	32°	34°	36°	38°
8711	8373	7628	6838	6084	5224	4227	3199	2285	1558	1065	749	539	378	251	161	99	69	49	35
100%	96%	88%	78%	70%	60%	49%	37%	26%	18%	12%	9%	6%	4%	3%	2%	1%	1%	1%	0%

## Intensities in 270° C-plane

0°	2°	4°	6°	8°	10°	12°	14°	16°	18°	20°	22°	24°	26°	28°	30°	32°	34°	36°	38°
8711	8373	7628	6838	6084	5224	4227	3199	2285	1558	1065	749	539	378	251	161	99	69	49	35
100%	96%	88%	78%	70%	60%	49%	37%	26%	18%	12%	9%	6%	4%	3%	2%	1%	1%	1%	0%

Beam Angle 50%	Field Angle 10%	Cutoff Angle 2,5%	Intensity Ratio in 120° Cone	Intensity Ratio in 90° Cone
23.5°	42.2°	57.2°	99.9%	99.6%

# 7P Hex IP



Light Efficiency:



Light Quality:



Color Temperature:



Output: 1666 lm

Peak: 8836 cd

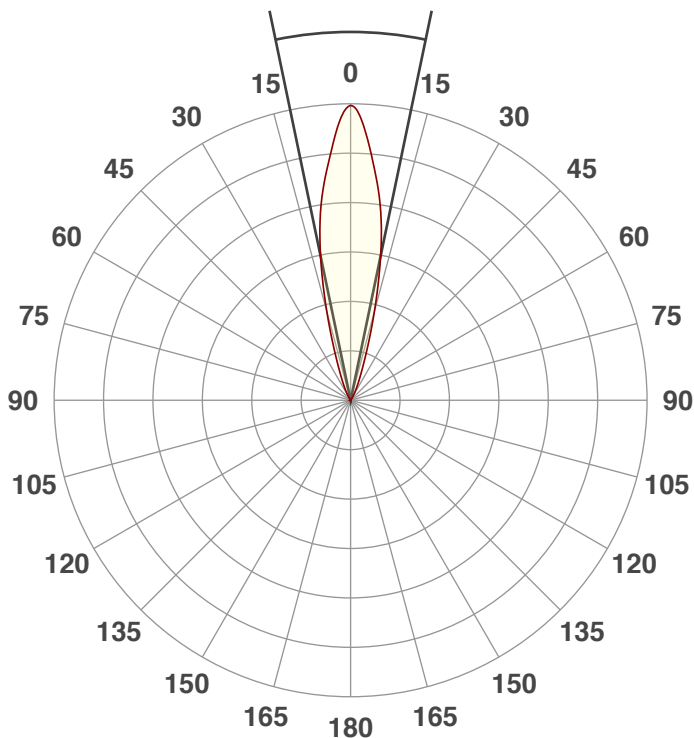
Power: 46.7 W

PF: 0.99



Beam Angle

23.5°



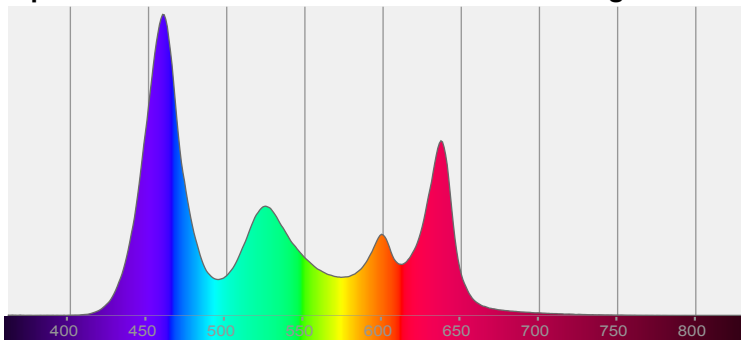
Test: Full On No UV  
Date: 6/20/2018  
Note:



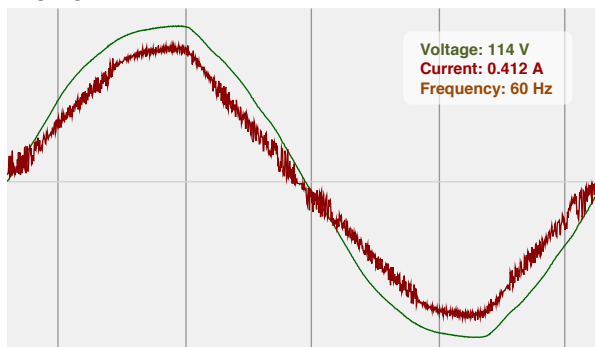
CIE 1931  
x: 0.278  
y: 0.246

Spectra

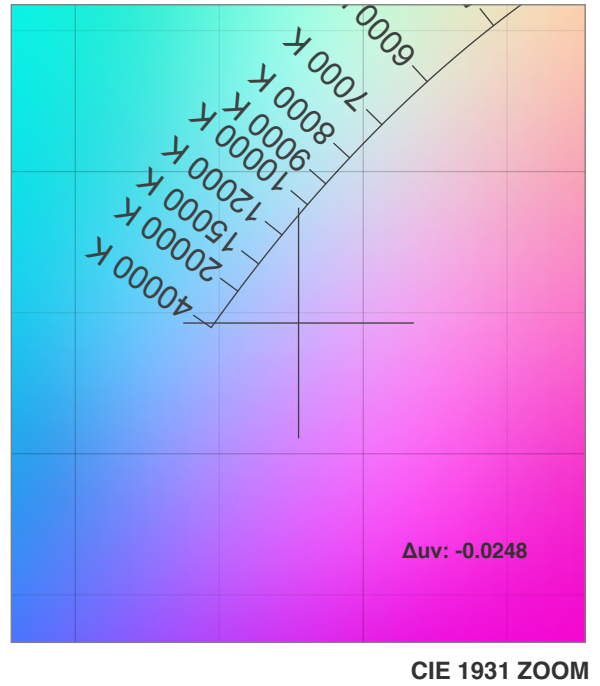
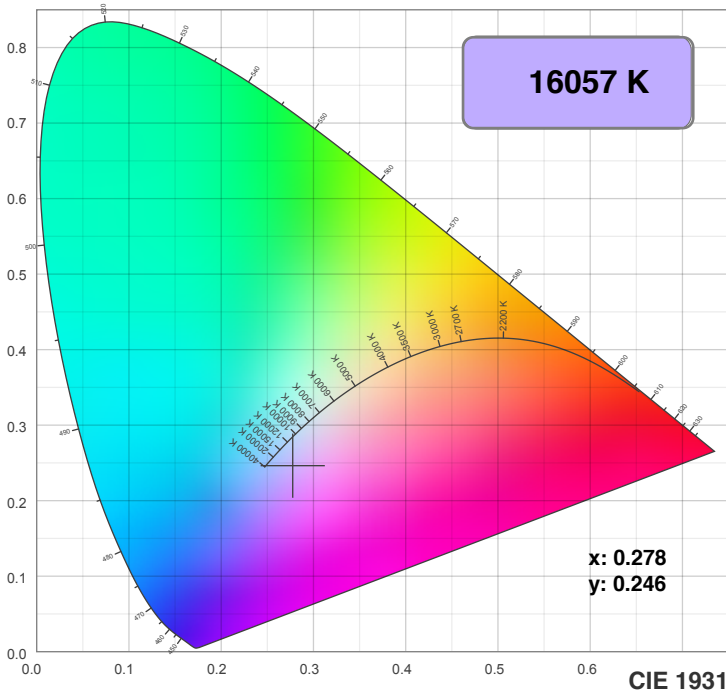
Dominant Wavelength: 368nm



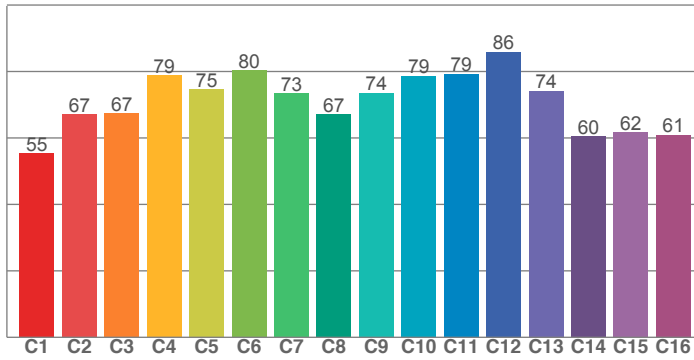
Power



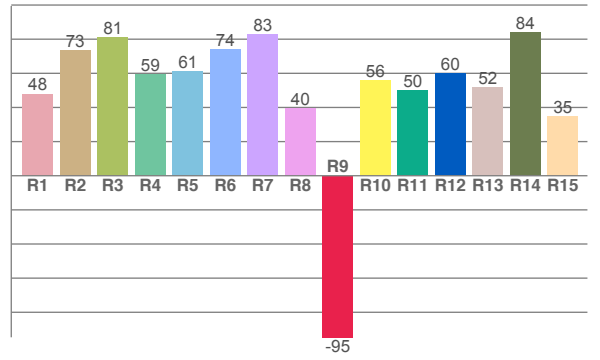
# Color Details



**TM30: 72.1**



**CRI: 64.9 (R1-R8)**



**CRI R values, only R1-R8 are used to calculate final CRI value**

R1	R2	R3	R4	R5	R6	R7	R8	R9	R10	R11	R12	R13	R14	R15
48.0	73.5	81.1	59.3	61.1	74.1	82.7	39.7	-94.7	55.7	50.2	59.8	51.9	83.8	34.6

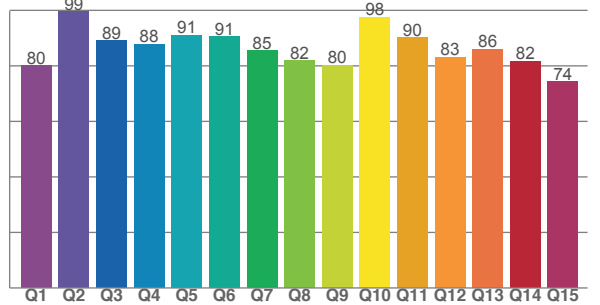
**TM30 C values, 16 binned values out of total of 99 C values**

C1	C2	C3	C4	C5	C6	C7	C8	C9	C10	C11	C12	C13	C14	C15	C16
55.3	67.1	67.4	78.8	74.7	80.3	73.4	67.1	73.6	78.7	79.3	85.9	74.2	60.5	61.6	60.9

**CQS Q values**

Q1	Q2	Q3	Q4	Q5	Q6	Q7	Q8	Q9	Q10	Q11	Q12	Q13	Q14	Q15
80.0	99.5	89.1	87.9	91.1	90.6	85.5	81.9	80.3	97.6	90.2	83.1	86.1	81.7	74.4

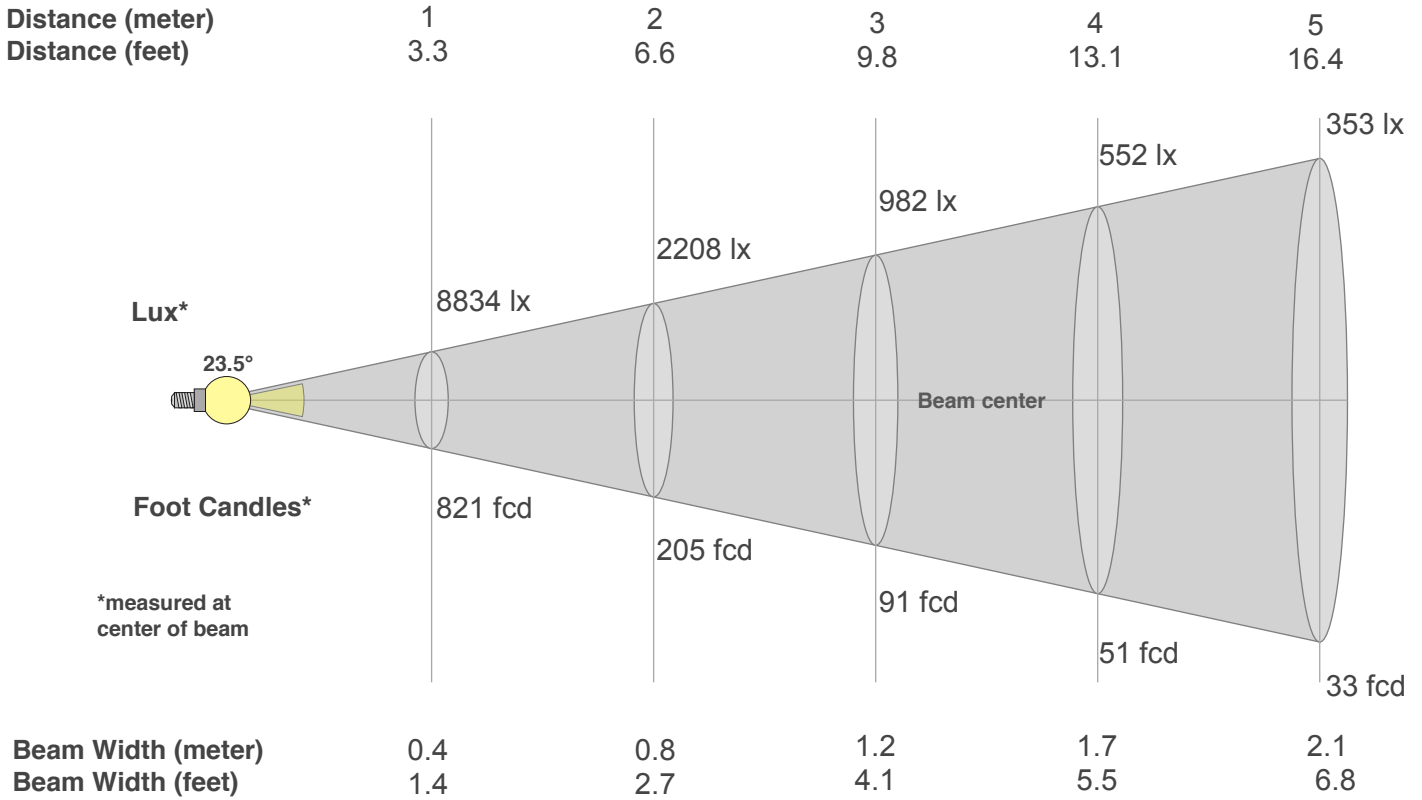
**CQS: 85.1**



## Color Parameters

Color Temperature	Color Rendering Index	Red Component	Color Fidelity	Color Gamut	Color Quality Scale	Color Coordinate CIE 1931	Color Coordinate CIE 1931	Color Coordinate	Color Coordinate	Color Deviation from Black Body
CCT	CRI	CRI R9	TM30 Rf	TM30 Rg	CQS	x	y	u	v	Δuv
16057 K	64.9	-94.7	72.1	109.7	85.1	0.278	0.246	0.206	0.274	-0.0248

# Beam Details



## Beam Intensities from 1-20m

m	1	2	3	4	5	6	7	8	9	10	11	12	13	14	15	16	17	18	19	20
ft	3.3	6.6	9.8	13.1	16.4	19.7	23	26.2	29.5	32.8	36.1	39.4	42.7	45.9	49.2	52.5	55.8	59.1	62.3	65.6
lx	8834	2208	982	552	353	245	180	138	109	88	73	61	52	45	39	35	31	27	24	22
fcd	820.7	205.2	91.2	51.3	32.8	22.8	16.7	12.8	10.1	8.2	6.8	5.7	4.9	4.2	3.6	3.2	2.8	2.5	2.3	2.1

## Intensities in 0° C-plane

0°	2°	4°	6°	8°	10°	12°	14°	16°	18°	20°	22°	24°	26°	28°	30°	32°	34°	36°	38°
8834	8454	7680	6909	6157	5292	4294	3252	2310	1570	1070	753	533	371	245	156	96	69	46	33
100%	96%	87%	78%	70%	60%	49%	37%	26%	18%	12%	9%	6%	4%	3%	2%	1%	1%	1%	0%

## Intensities in 90° C-plane

0°	2°	4°	6°	8°	10°	12°	14°	16°	18°	20°	22°	24°	26°	28°	30°	32°	34°	36°	38°
8834	8454	7680	6909	6157	5292	4294	3252	2310	1570	1070	753	533	371	245	156	96	69	46	33
100%	96%	87%	78%	70%	60%	49%	37%	26%	18%	12%	9%	6%	4%	3%	2%	1%	1%	1%	0%

## Intensities in 180° C-plane

0°	2°	4°	6°	8°	10°	12°	14°	16°	18°	20°	22°	24°	26°	28°	30°	32°	34°	36°	38°
8834	8484	7727	6930	6167	5300	4291	3247	2315	1583	1082	762	547	383	255	162	100	70	46	35
100%	96%	87%	78%	70%	60%	49%	37%	26%	18%	12%	9%	6%	4%	3%	2%	1%	1%	1%	0%

## Intensities in 270° C-plane

0°	2°	4°	6°	8°	10°	12°	14°	16°	18°	20°	22°	24°	26°	28°	30°	32°	34°	36°	38°
8834	8484	7727	6930	6167	5300	4291	3247	2315	1583	1082	762	547	383	255	162	100	70	46	35
100%	96%	87%	78%	70%	60%	49%	37%	26%	18%	12%	9%	6%	4%	3%	2%	1%	1%	1%	0%

Beam Angle 50%	Field Angle 10%	Cutoff Angle 2,5%	Intensity Ratio in 120° Cone	Intensity Ratio in 90° Cone
23.5°	42.2°	57.2°	99.9%	99.6%

# 7P Hex IP



**Light Efficiency:**

33 Lumen/Watt

**Dominant Wavelength:**

623 nm

**Output:**

283 lm

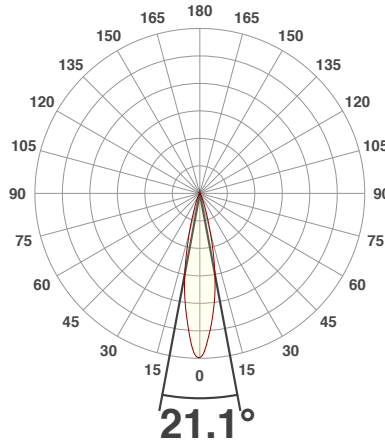
**Power:**

8.5 W

**Peak:**

1769 cd

**Beam Angle**



Test:

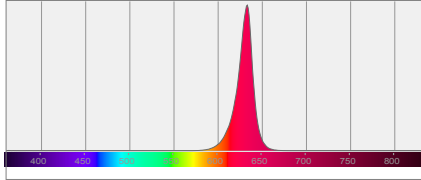
Red

Date:

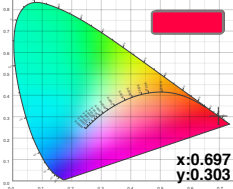
6/20/2018

Note:

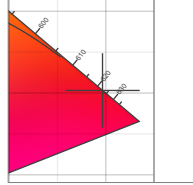
**Spectral Distribution**



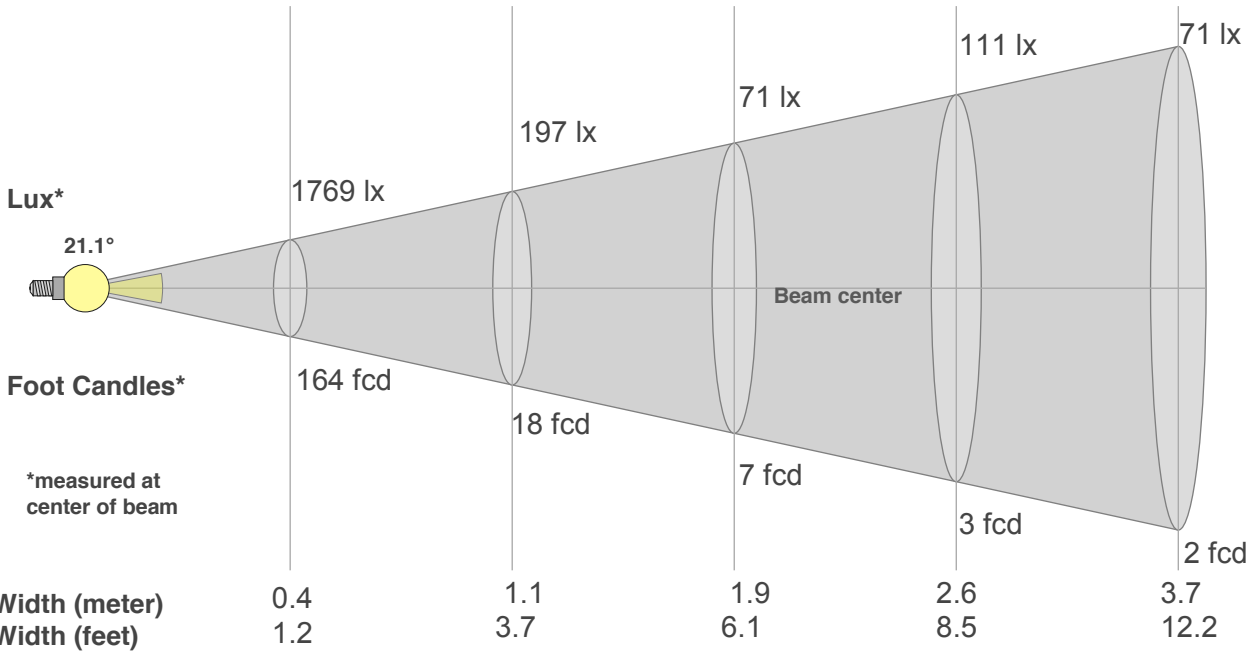
**Color Coordinates**



**Zoom Color Point**



Distance (meter)	1	3	5	7	10
Distance (feet)	3.3	9.8	16.4	22.9	32.8



Beam Angle 50%	Field Angle 10%	Cutoff Angle 2,5%	Intensity Ratio in 120° Cone	Intensity Ratio in 90° Cone
21.1°	39°	53.8°	100.0%	99.8%

**Beam Intensities from 1-20m**

m	1	2	3	4	5	6	7	8	9	10	11	12	13	14	15	16	17	18	19	20
ft	3.3	6.6	9.8	13.1	16.4	19.7	23	26.2	29.5	32.8	36.1	39.4	42.7	45.9	49.2	52.5	55.8	59.1	62.3	65.6
lx	1769	442	197	111	71	49	36	28	22	18	15	12	10	9	8	7	6	5	5	4
fcd	164.4	41.1	18.3	10.3	6.6	4.6	3.4	2.6	2	1.6	1.4	1.1	1	0.8	0.7	0.6	0.6	0.5	0.5	0.4



# 7P Hex IP



**Light Efficiency:**

49 Lumen/Watt

**Dominant Wavelength:**

530 nm

**Output:**

615 lm

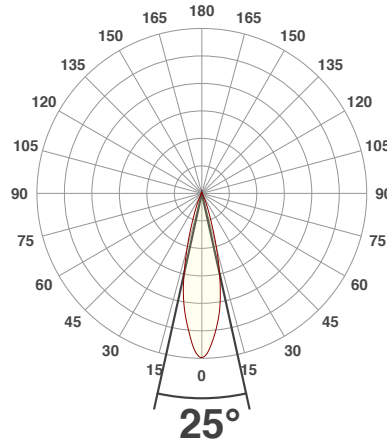
**Power:**

12.5 W

**Peak:**

2998 cd

**Beam Angle**



Test:

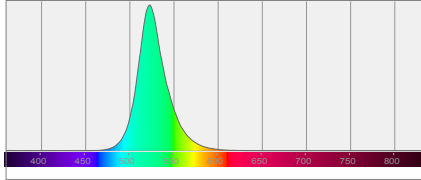
**Green**

Date:

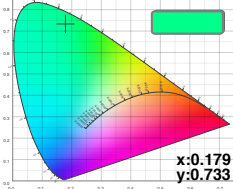
**6/20/2018**

Note:

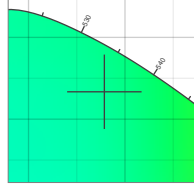
**Spectral Distribution**



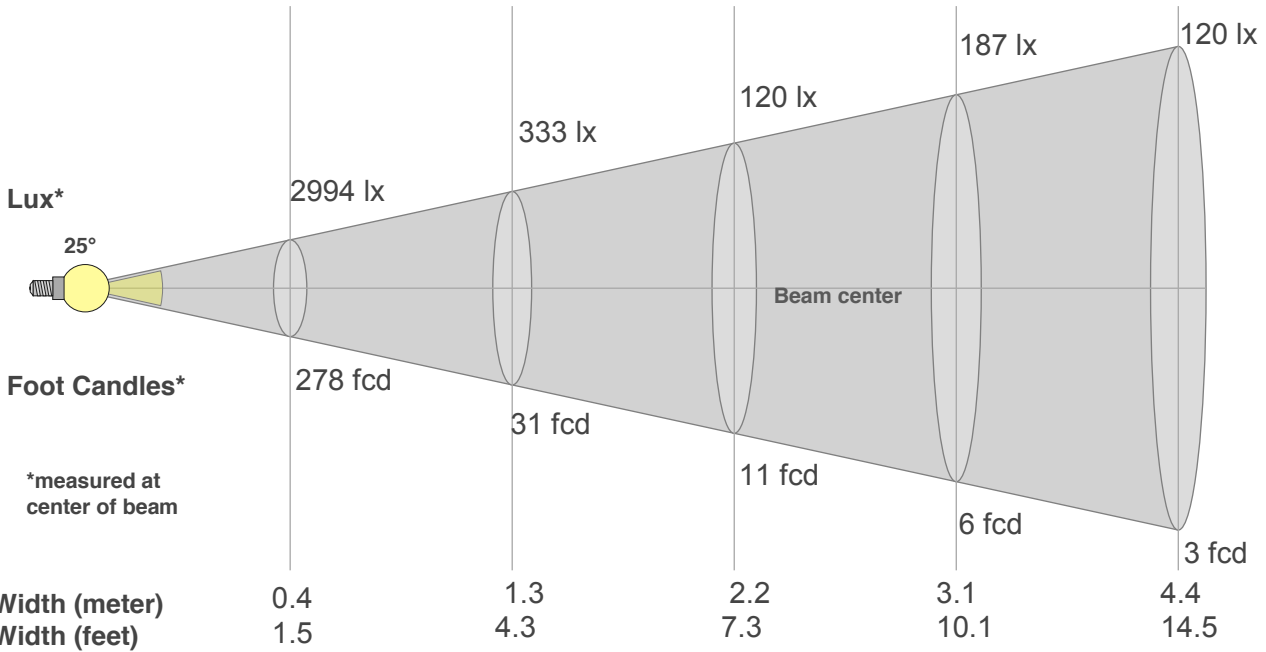
**Color Coordinates**



**Zoom Color Point**



Distance (meter)	1	3	5	7	10
Distance (feet)	3.3	9.8	16.4	22.9	32.8



\*measured at center of beam

Beam Angle 50%	Field Angle 10%	Cutoff Angle 2,5%	Intensity Ratio in 120° Cone	Intensity Ratio in 90° Cone
25°	43°	58°	99.7%	99.0%

**Beam Intensities from 1-20m**

m	1	2	3	4	5	6	7	8	9	10	11	12	13	14	15	16	17	18	19	20
ft	3.3	6.6	9.8	13.1	16.4	19.7	23	26.2	29.5	32.8	36.1	39.4	42.7	45.9	49.2	52.5	55.8	59.1	62.3	65.6
lx	2994	748	333	187	120	83	61	47	37	30	25	21	18	15	13	12	10	9	8	7
fcd	278.1	69.5	30.9	17.4	11.1	7.7	5.7	4.3	3.4	2.8	2.3	1.9	1.6	1.4	1.2	1.1	1	0.9	0.8	0.7

# 7P Hex IP



**Light Efficiency:**

11 Lumen/Watt

**Dominant Wavelength:**

463 nm

**Output:**

140 lm

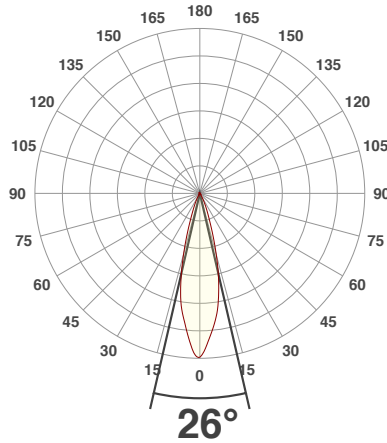
**Power:**

13.1 W

**Peak:**

626 cd

**Beam Angle**



Test:

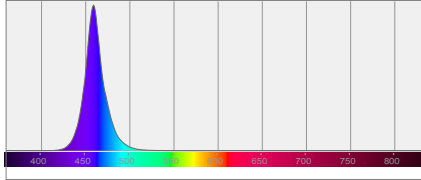
Blue

Date:

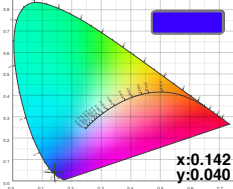
6/20/2018

Note:

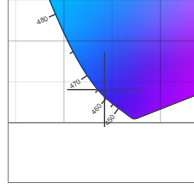
**Spectral Distribution**



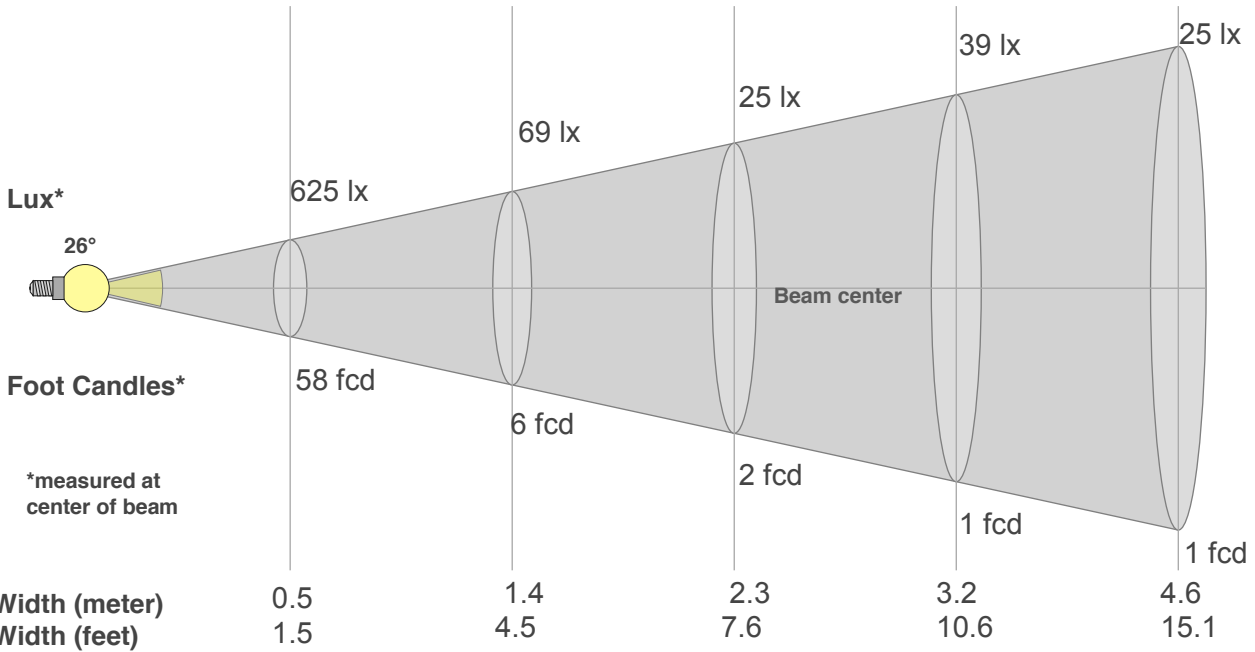
**Color Coordinates**



**Zoom Color Point**



Distance (meter)	1	3	5	7	10
Distance (feet)	3.3	9.8	16.4	22.9	32.8



Beam Angle 50%	Field Angle 10%	Cutoff Angle 2,5%	Intensity Ratio in 120° Cone	Intensity Ratio in 90° Cone
26°	45.9°	60.1°	99.4%	98.7%

**Beam Intensities from 1-20m**

m	1	2	3	4	5	6	7	8	9	10	11	12	13	14	15	16	17	18	19	20
ft	3.3	6.6	9.8	13.1	16.4	19.7	23	26.2	29.5	32.8	36.1	39.4	42.7	45.9	49.2	52.5	55.8	59.1	62.3	65.6
lx	625	156	69	39	25	17	13	10	8	6	5	4	4	3	3	2	2	2	2	2
fcd	58.1	14.5	6.5	3.6	2.3	1.6	1.2	0.9	0.7	0.6	0.5	0.4	0.3	0.3	0.3	0.2	0.2	0.2	0.2	0.1

# 7P Hex IP

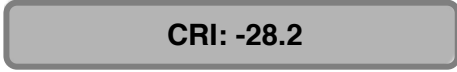


Light Efficiency:



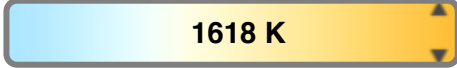
Output: 260 lm

Light Quality:



Peak: 1177 cd

Color Temperature:

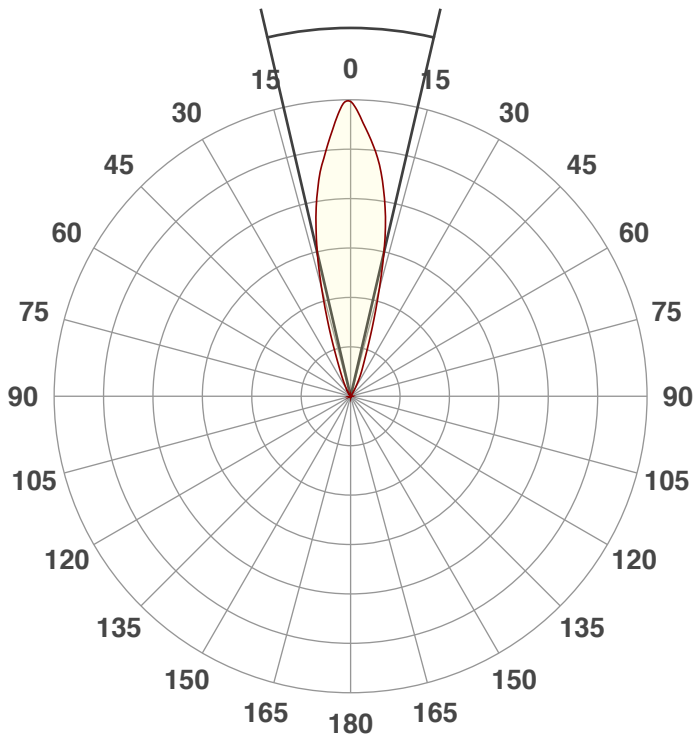


Power: 9.2 W

PF: 0.93

Beam Angle

26.1°



Test:

Amber

Date:

6/20/2018

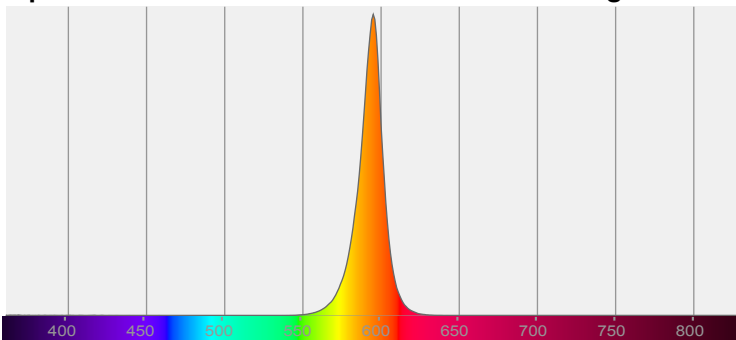
Note:



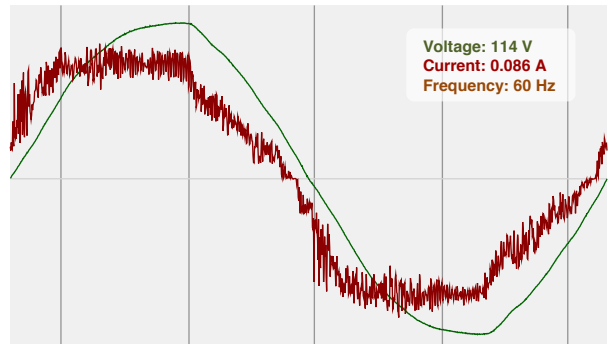
CIE 1931  
x: 0.584  
y: 0.415

Spectra

Dominant Wavelength: 592nm

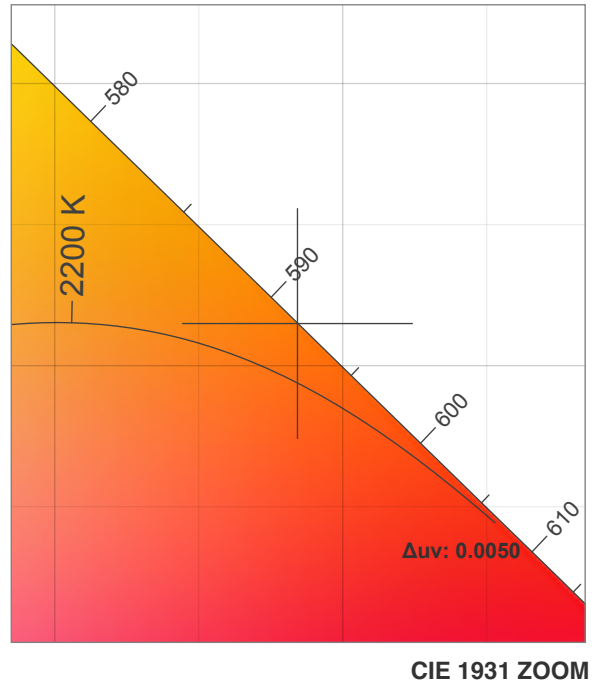
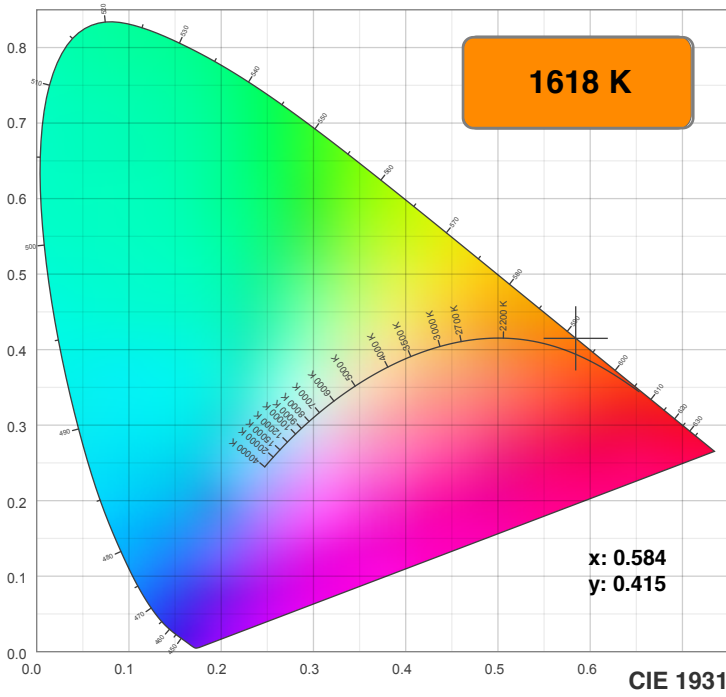


Power

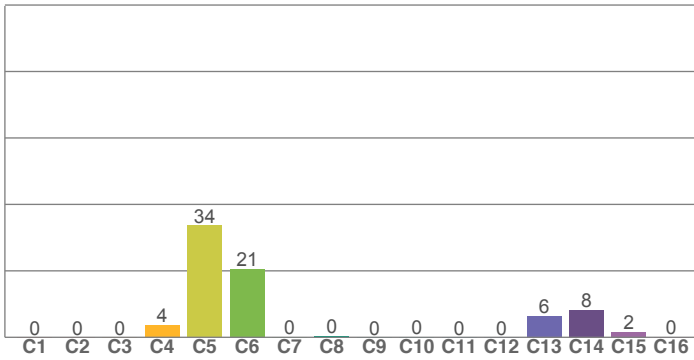


Voltage: 114 V  
Current: 0.086 A  
Frequency: 60 Hz

# Color Details



TM30: 0.2



CRI R values, only R1-R8 are used to calculate final CRI value

R1	R2	R3	R4	R5	R6	R7	R8	R9	R10	R11	R12	R13	R14	R15
-43.7	48.4	14.1	-77.1	-50.3	34.8	-10.1	-142.0	-415.3	23.6	-107.5	-21.1	-23.4	43.2	-76.1

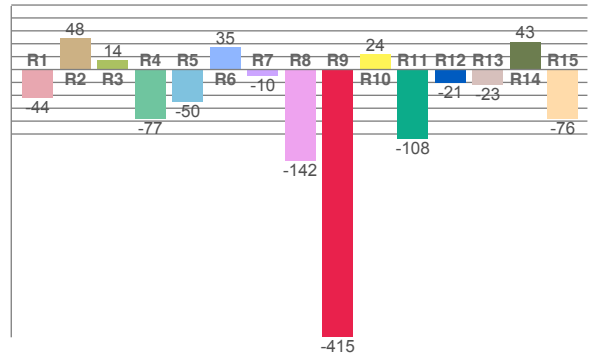
TM30 C values, 16 binned values out of total of 99 C values

C1	C2	C3	C4	C5	C6	C7	C8	C9	C10	C11	C12	C13	C14	C15	C16
0.0	0.0	0.0	3.7	33.6	20.5	0.0	0.4	0.0	0.1	0.0	0.0	6.5	8.3	1.6	0.2

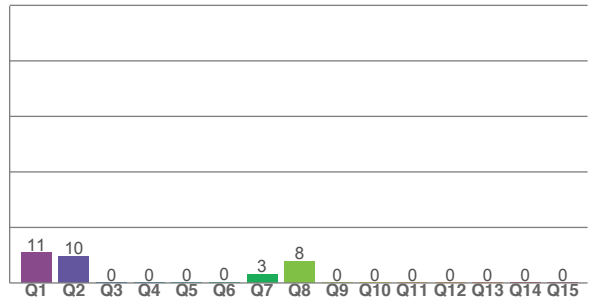
CQS Q values

Q1	Q2	Q3	Q4	Q5	Q6	Q7	Q8	Q9	Q10	Q11	Q12	Q13	Q14	Q15
10.9	9.6	0.0	0.0	0.1	0.3	3.2	7.9	0.0	0.0	0.0	0.0	0.0	0.0	0.1

CRI: -28.2 (R1-R8)



CQS: 0.0



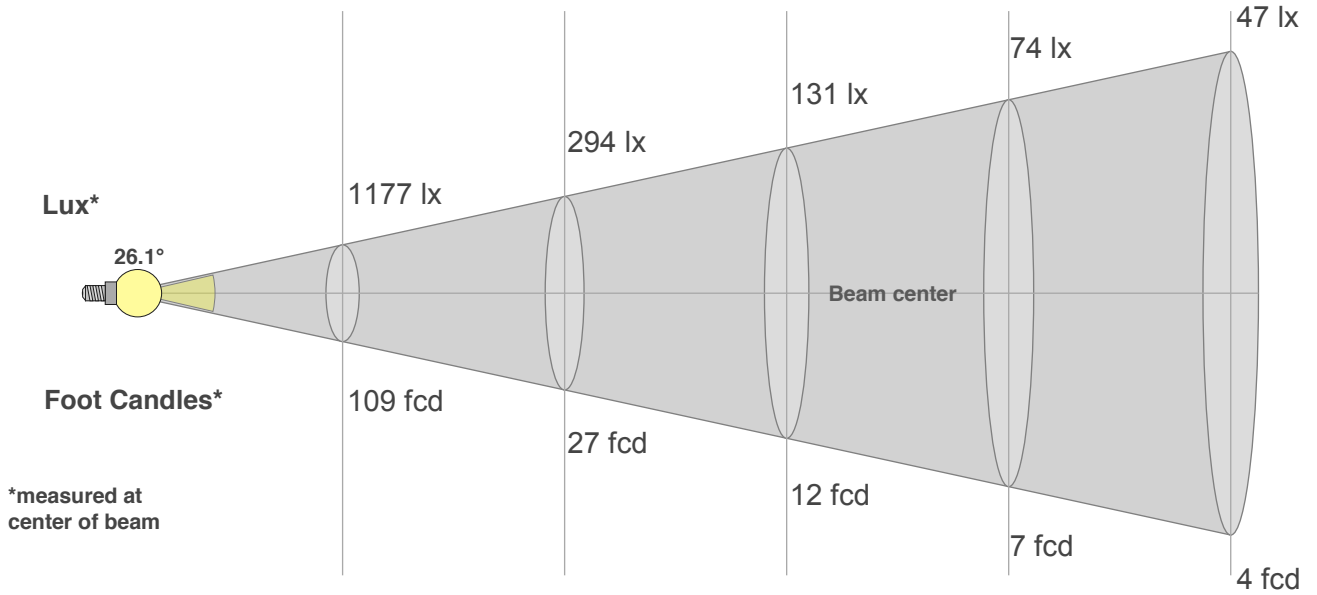
## Color Parameters

Color Temperature	Color Rendering Index	Red Component	Color Fidelity	Color Gamut	Color Quality Scale	Color Coordinate CIE 1931	Color Coordinate CIE 1931	Color Coordinate	Color Coordinate	Color Deviation from Black Body
CCT	CRI	CRI R9	TM30 Rf	TM30 Rg	CQS	x	y	u	v	Δuv
1618 K	-28.2	-415.3	0.2	1.2	0.0	0.584	0.415	0.343	0.366	0.0050

# Beam Details

Distance (meter)  
Distance (feet)

1 2 3 4 5  
3.3 6.6 9.8 13.1 16.4



Beam Width (meter)  
Beam Width (feet)

0.5 0.9 1.4 1.9 2.3  
1.5 3.1 4.5 6.1 7.6

## Beam Intensities from 1-20m

m	1	2	3	4	5	6	7	8	9	10	11	12	13	14	15	16	17	18	19	20
ft	3.3	6.6	9.8	13.1	16.4	19.7	23	26.2	29.5	32.8	36.1	39.4	42.7	45.9	49.2	52.5	55.8	59.1	62.3	65.6
lx	1177	294	131	74	47	33	24	18	15	12	10	8	7	6	5	5	4	4	3	3
fcd	109.3	27.3	12.1	6.8	4.4	3	2.2	1.7	1.3	1.1	0.9	0.8	0.6	0.6	0.5	0.4	0.4	0.3	0.3	0.3

## Intensities in 0° C-plane

0°	2°	4°	6°	8°	10°	12°	14°	16°	18°	20°	22°	24°	26°	28°	30°	32°	34°	36°	38°
1177	1147	1061	974	890	784	660	522	378	257	168	115	84	62	43	29	19	13	10	8
100%	97%	90%	83%	76%	67%	56%	44%	32%	22%	14%	10%	7%	5%	4%	2%	2%	1%	1%	1%

## Intensities in 90° C-plane

0°	2°	4°	6°	8°	10°	12°	14°	16°	18°	20°	22°	24°	26°	28°	30°	32°	34°	36°	38°
1177	1147	1061	974	890	784	660	522	378	257	168	115	84	62	43	29	19	13	10	8
100%	97%	90%	83%	76%	67%	56%	44%	32%	22%	14%	10%	7%	5%	4%	2%	2%	1%	1%	1%

## Intensities in 180° C-plane

0°	2°	4°	6°	8°	10°	12°	14°	16°	18°	20°	22°	24°	26°	28°	30°	32°	34°	36°	38°
1177	1116	1046	975	889	785	664	516	374	262	184	136	105	77	51	33	20	13	10	7
100%	95%	89%	83%	76%	67%	56%	44%	32%	22%	16%	12%	9%	7%	4%	3%	2%	1%	1%	1%

## Intensities in 270° C-plane

0°	2°	4°	6°	8°	10°	12°	14°	16°	18°	20°	22°	24°	26°	28°	30°	32°	34°	36°	38°
1177	1116	1046	975	889	785	664	516	374	262	184	136	105	77	51	33	20	13	10	7
100%	95%	89%	83%	76%	67%	56%	44%	32%	22%	16%	12%	9%	7%	4%	3%	2%	1%	1%	1%

Beam Angle 50%	Field Angle 10%	Cutoff Angle 2,5%	Intensity Ratio in 120° Cone	Intensity Ratio in 90° Cone
26.1°	45°	60.4°	99.7%	99.1%

# 7P Hex IP



Light Efficiency:

50 Lumen/Watt

Light Quality:

CRI: 72.5

Color Temperature:

6922 K

Output: 628 lm

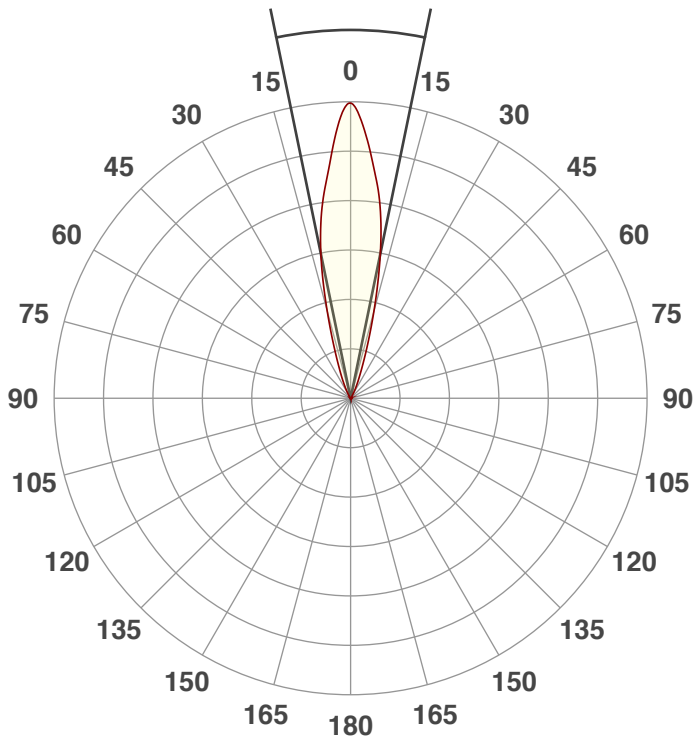
Peak: 3377 cd

Power: 12.5 W

PF: 0.96

Beam Angle

23.3°



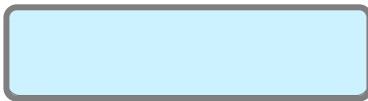
Test:

White

Date:

6/20/2018

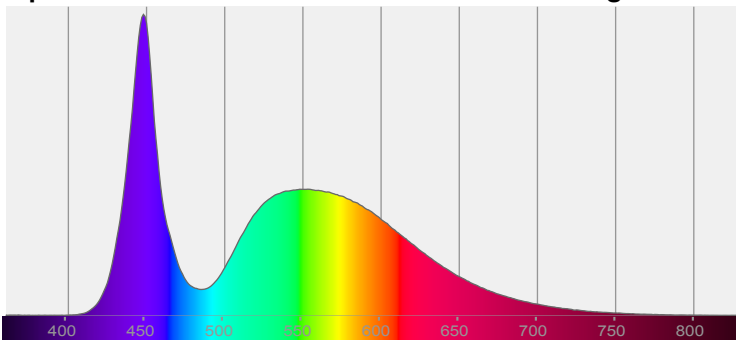
Note:



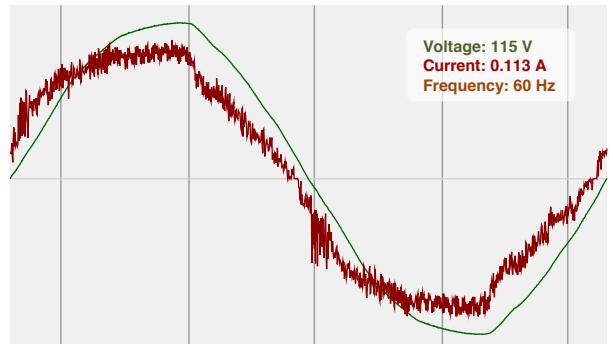
CIE 1931  
x: 0.308  
y: 0.317

Spectra

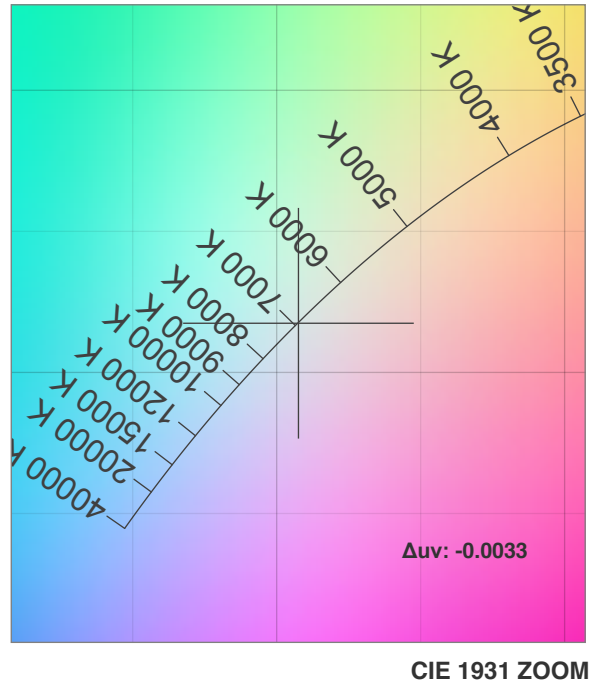
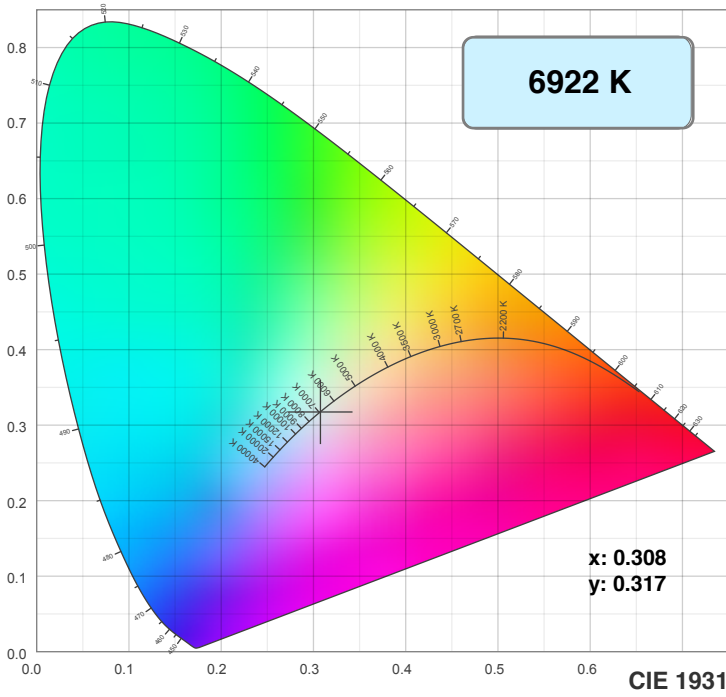
Dominant Wavelength: 428nm



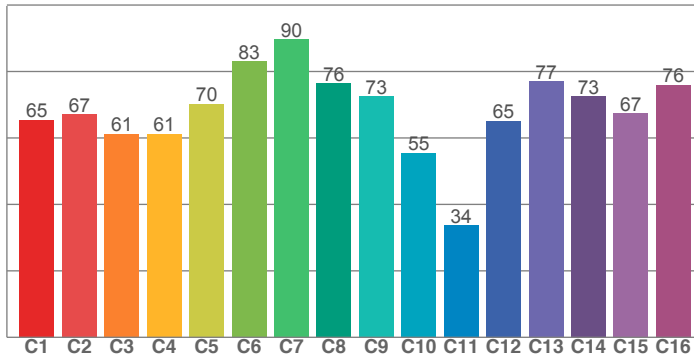
Power



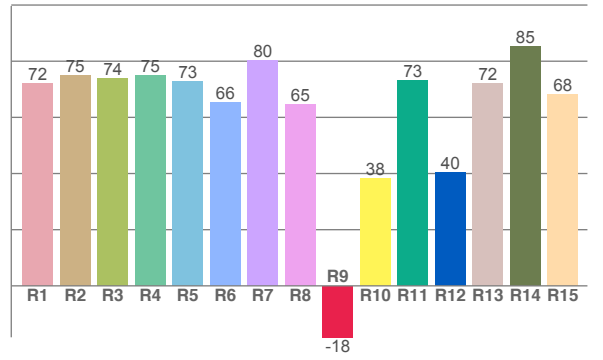
# Color Details



**TM30: 68.2**



**CRI: 72.5 (R1-R8)**



CRI R values, only R1-R8 are used to calculate final CRI value

R1	R2	R3	R4	R5	R6	R7	R8	R9	R10	R11	R12	R13	R14	R15
72.2	75.0	74.0	75.0	72.9	65.5	80.2	64.8	-18.3	38.1	73.2	40.5	72.0	85.3	68.1

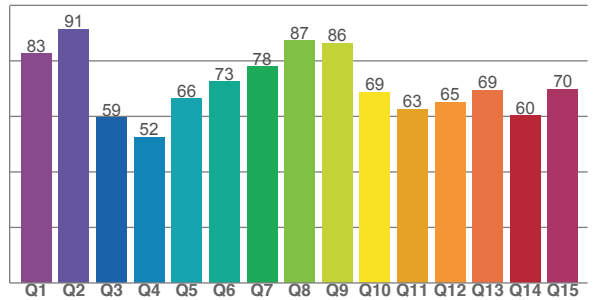
TM30 C values, 16 binned values out of total of 99 C values

C1	C2	C3	C4	C5	C6	C7	C8	C9	C10	C11	C12	C13	C14	C15	C16
65.4	67.1	61.2	61.3	70.3	83.1	89.7	76.4	72.5	55.5	33.7	65.2	76.9	72.6	67.3	75.9

CQS Q values

Q1	Q2	Q3	Q4	Q5	Q6	Q7	Q8	Q9	Q10	Q11	Q12	Q13	Q14	Q15
82.6	91.4	59.4	52.5	66.5	72.5	78.0	87.4	86.3	68.7	62.6	65.1	69.4	60.2	69.8

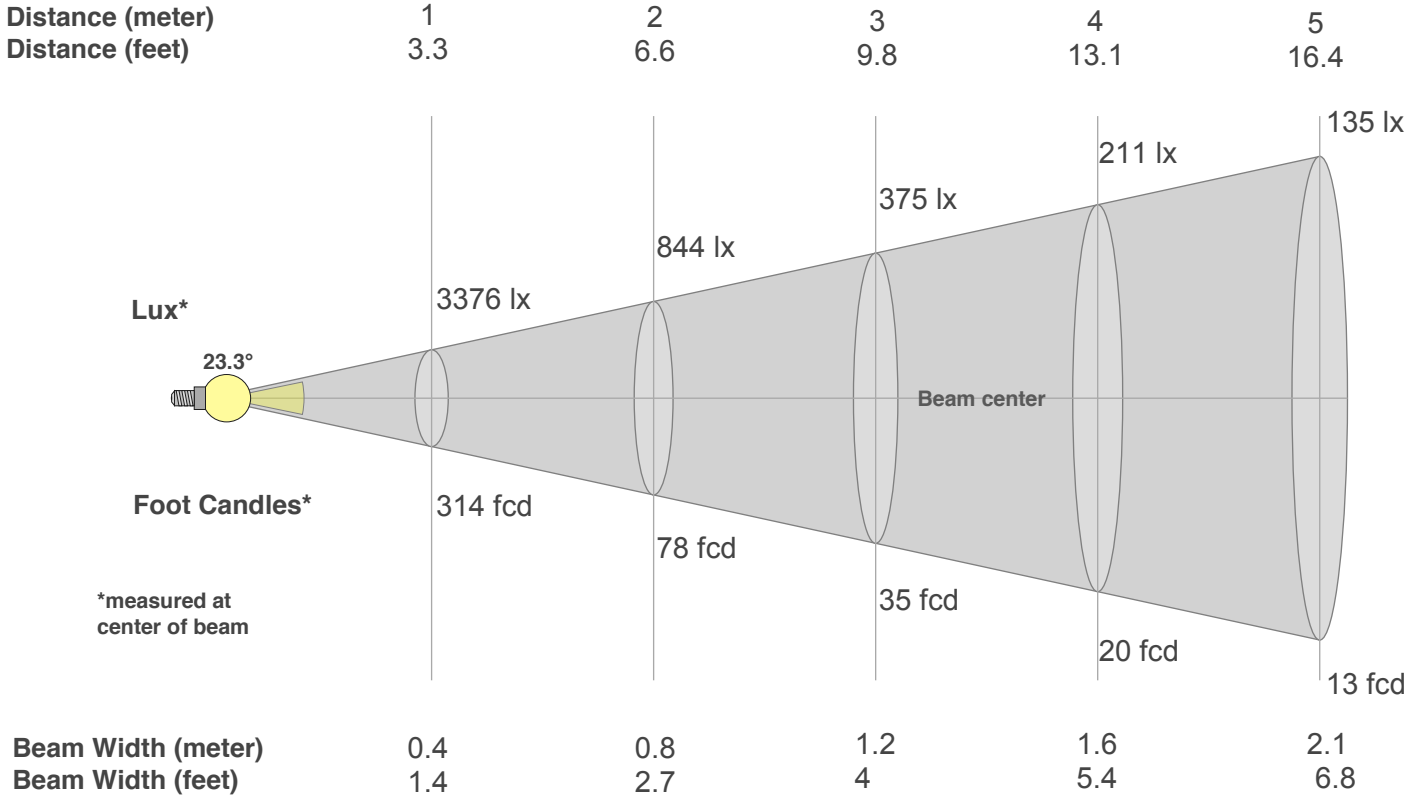
**CQS: 69.4**



## Color Parameters

Color Temperature	Color Rendering Index	Red Component	Color Fidelity	Color Gamut	Color Quality Scale	Color Coordinate CIE 1931	Color Coordinate CIE 1931	Color Coordinate	Color Coordinate	Color Deviation from Black Body
CCT	CRI	CRI R9	TM30 Rf	TM30 Rg	CQS	x	y	u	v	Δuv
6922 K	72.5	-18.3	68.2	94.9	69.4	0.308	0.317	0.199	0.307	-0.0033

# Beam Details



## Beam Intensities from 1-20m

m	1	2	3	4	5	6	7	8	9	10	11	12	13	14	15	16	17	18	19	20
ft	3.3	6.6	9.8	13.1	16.4	19.7	23	26.2	29.5	32.8	36.1	39.4	42.7	45.9	49.2	52.5	55.8	59.1	62.3	65.6
lx	3376	844	375	211	135	94	69	53	42	34	28	23	20	17	15	13	12	10	9	8
fcd	313.6	78.4	34.8	19.6	12.5	8.7	6.4	4.9	3.9	3.1	2.6	2.2	1.9	1.6	1.4	1.2	1.1	1	0.9	0.8

## Intensities in 0° C-plane

0°	2°	4°	6°	8°	10°	12°	14°	16°	18°	20°	22°	24°	26°	28°	30°	32°	34°	36°	38°
3376	3230	2893	2559	2284	1975	1621	1226	870	598	415	294	208	142	93	61	39	28	18	14
100%	96%	86%	76%	68%	58%	48%	36%	26%	18%	12%	9%	6%	4%	3%	2%	1%	1%	1%	0%

## Intensities in 90° C-plane

0°	2°	4°	6°	8°	10°	12°	14°	16°	18°	20°	22°	24°	26°	28°	30°	32°	34°	36°	38°
3376	3230	2893	2559	2284	1975	1621	1226	870	598	415	294	208	142	93	61	39	28	18	14
100%	96%	86%	76%	68%	58%	48%	36%	26%	18%	12%	9%	6%	4%	3%	2%	1%	1%	1%	0%

## Intensities in 180° C-plane

0°	2°	4°	6°	8°	10°	12°	14°	16°	18°	20°	22°	24°	26°	28°	30°	32°	34°	36°	38°
3376	3209	2921	2619	2340	2003	1615	1218	866	593	401	277	194	133	87	55	36	25	18	13
100%	95%	87%	78%	69%	59%	48%	36%	26%	18%	12%	8%	6%	4%	3%	2%	1%	1%	1%	0%

## Intensities in 270° C-plane

0°	2°	4°	6°	8°	10°	12°	14°	16°	18°	20°	22°	24°	26°	28°	30°	32°	34°	36°	38°
3376	3209	2921	2619	2340	2003	1615	1218	866	593	401	277	194	133	87	55	36	25	18	13
100%	95%	87%	78%	69%	59%	48%	36%	26%	18%	12%	8%	6%	4%	3%	2%	1%	1%	1%	0%

Beam Angle 50%	Field Angle 10%	Cutoff Angle 2,5%	Intensity Ratio in 120° Cone	Intensity Ratio in 90° Cone
23.3°	42.1°	56.6°	99.9%	99.4%



